

ULTIMA

G S T A A D

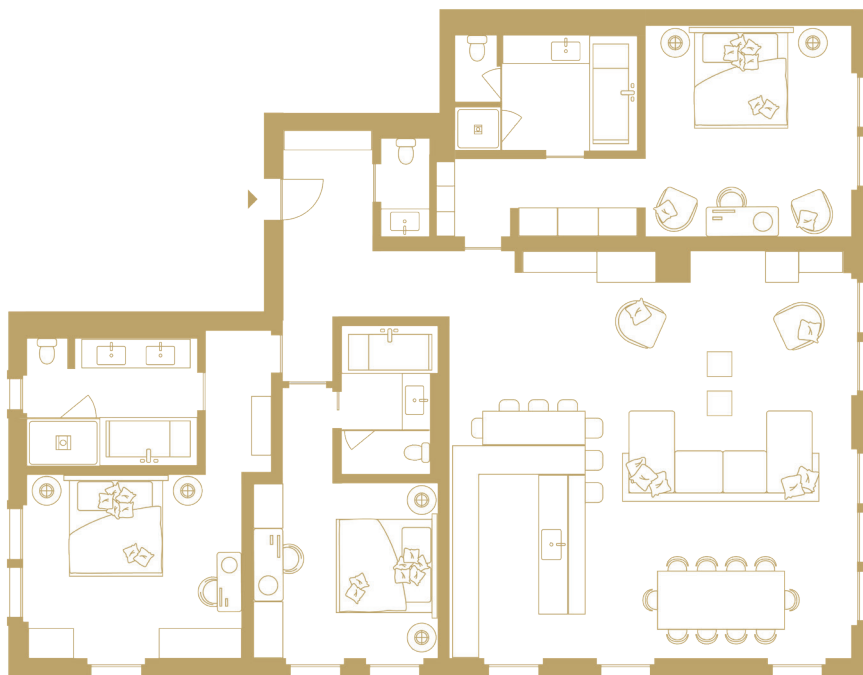
THREE-BEDROOM RESIDENCE - N°11

Covering an area of 180m², the three-bedroom residence combines the authenticity of an alpine chalet and contemporary design. In a luxurious and elegant atmosphere, the residence is composed of a lounge, a reception area and three spacious bedrooms each with their bathroom and dressing areas. Each room has been carefully designed to give a relaxing and optimum privacy. Located on the ground floor, the residence has an exclusive garden and a private outdoor Jacuzzi.



Details: 180m², ground floor, private garden, private outdoor Jacuzzi, 3 bedrooms with super king size beds, private bathrooms and dressings, living room, dining area with table for 8 persons, fully equipped kitchen, visitor restroom, traditional fireplace, wi-fi.

PLAN



TWO-BEDROOM RESIDENCE - N°12

Covering an area of 148m², the two-bedroom residence combines the authenticity of an alpine chalet and contemporary design. In a luxurious and elegant atmosphere, the residence is composed of a lounge, a reception area and two spacious bedrooms each with their bathroom and dressing areas. Each room has been carefully designed to give a relaxing and optimum privacy. Located on the ground floor, the residence has an exclusive garden and a private outdoor Jacuzzi.



Details: 148m², ground floor, private garden, outdoor private Jacuzzi, 2 bedrooms with super king size beds, private bathrooms and dressings, living room, dining area with table for 8 persons, fully equipped kitchen, visitor restroom, traditional fireplace, wi-fi.

PLAN



ULTIMA

G S T A A D

THREE-BEDROOM RESIDENCE - N°21

Covering an area of 220m², the three-bedroom residence combines the authenticity of an alpine chalet and contemporary design. In a luxurious and elegant atmosphere, the residence is composed of a lounge, a reception area and three spacious bedrooms each with their bathroom and dressing areas. Each room has been carefully designed to give a relaxing and optimum privacy.



Details: 220m², 1st floor, private balconies, 3 bedrooms with super king size beds, private bathrooms and dressings, living room, dining area with table for 8 persons, fully equipped kitchen, visitor restroom, traditional fireplace, wi-fi.

PLAN



ULTIMA

G S T A A D

FOUR-BEDROOM RESIDENCE - N°22

Covering an area of 250m², the four-bedroom residence combines the authenticity of an alpine chalet and contemporary design. In a luxurious and elegant atmosphere, the residence is composed of a lounge, a reception area and four spacious bedrooms each with their bathroom and dressing areas. Each room has been carefully designed to give a relaxing and optimum privacy.



Details: 250m², 1st floor, private balconies, 4 bedrooms with super king size beds, private bathrooms and dressings, living room, dining area with table for 8 persons, fully equipped kitchen, visitor restroom, traditional fireplace, wi-fi.

PLAN



ULTIMA

G S T A A D

TWO-BEDROOM RESIDENCE - N°31

Covering an area of 173m², the two-bedroom residence combines the authenticity of an alpine chalet and contemporary design. In a luxurious and elegant atmosphere, the residence is composed of a lounge, a reception area and two spacious bedrooms each with their bathroom and dressing areas. Each room has been carefully designed to give a relaxing and optimum privacy.



Details: 173m², 2nd floor, private balconies, 2 bedrooms with super king size beds, private bathrooms and dressings, living room, dining area with table for 8 persons, fully equipped kitchen, visitor restroom, traditional fireplace, wi-fi.

PLAN

