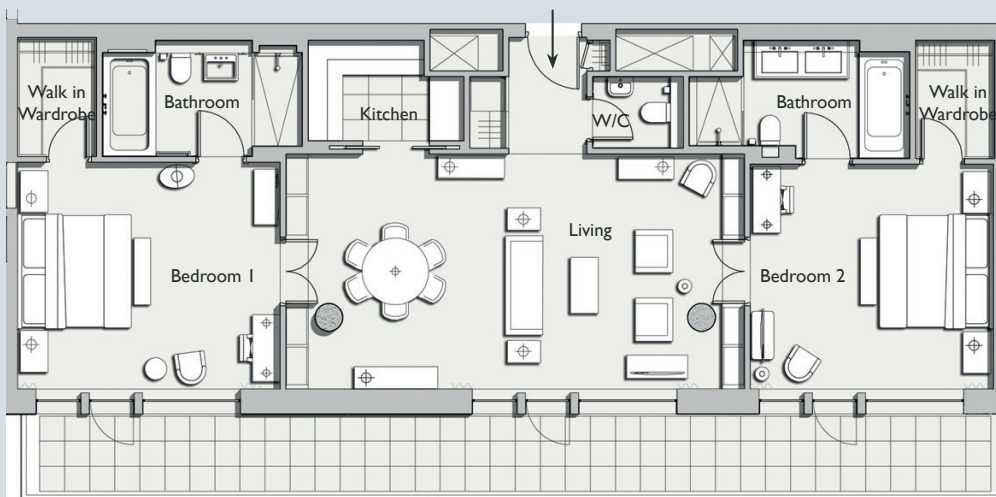


ONE DENMAN PLACE



APARTMENT 18

A 110m² (1,184 sq ft) 2 bedroom apartment, which is light and airy with floor to ceiling windows and large terrace. The apartment has beautiful oak floors in the living spaces, a powder room and a sleek Boffi kitchen. The king size double bedrooms have ensuite bathrooms beautifully designed in marble and oak.



FLOORPLAN



APARTMENT LOCATION

APARTMENT SPECIFICATION	
GROSS INTERNAL AREA:	110m ² (1,184 sq ft)
LOCATION:	Fourth Floor
ASPECT:	Denman Street
ROOM DIMENSIONS	
BEDROOM 1:	4.7 X 4.1m (15.5 X 13.3 ft)
BATHROOM 1:	3.6 X 2.1m (11.7 X 6.8 ft)
WALK-IN-WARDROBE:	2.1 X 1.4m (7.0 X 4.7 ft)
BEDROOM 2:	4.4 X 4.0m (14.4 X 13.2 ft)
BATHROOM 2:	3.9 X 2.1m (12.9 X 6.9 ft)
WALK-IN-WARDROBE:	2.1 X 1.4m (7.0 X 4.7 ft)
W/C:	1.6 X 1.3m (5.4 X 4.1 ft)
KITCHEN:	2.8 X 1.8m (9.2 X 5.9 ft)
LIVING ROOM:	8.2 X 4.2m (27.0 X 13.8 ft)

SPECIFICATION



DIRECTION ELEVATION



For further information please contact:
 T: +44 (0)20 3411 9200 E: info@onedenmanplace.com
 One Denman Place London W1D 7AH