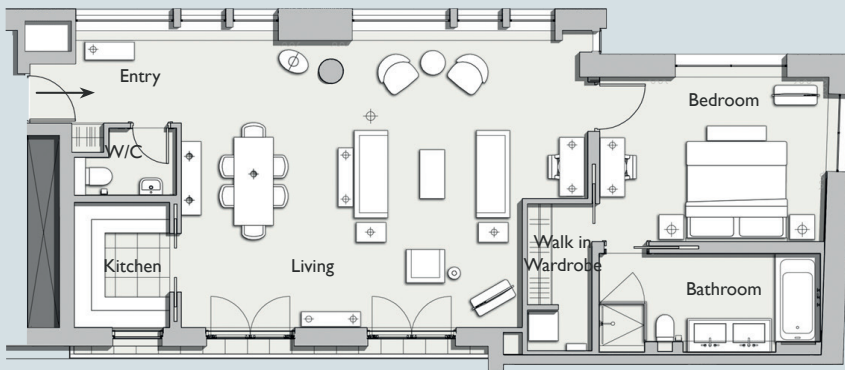


ONE DENMAN PLACE



APARTMENT 04

A 93m² (1,001 sq ft) 1 bedroom apartment, which is light and airy with floor to ceiling windows. The apartment has beautiful oak floors in the living spaces, a powder room and a sleek Boffi kitchen. The king size double bedroom has an ensuite bathroom beautifully designed in marble and oak.



FLOORPLAN



APARTMENT LOCATION



DIRECTION

APARTMENT SPECIFICATION	
GROSS INTERNAL AREA:	93m ² (1,001 sq ft)
LOCATION:	Fourth Floor
ASPECT:	Ham Yard
ROOM DIMENSIONS	
BEDROOM:	4.5 X 3.4m (14.8 X 11.2 ft)
BATHROOM:	4.5 X 2.0m (14.8 X 6.6 ft)
WALK-IN-WARDROBE:	3.0 X 1.3m (9.8 X 4.3 ft)
W/C:	1.9 X 1.3m (6.2 X 4.2 ft)
KITCHEN:	2.6 X 1.9m (8.4 X 6.3 ft)
LIVING ROOM:	8.2 X 5.9m (27.0 X 19.3 ft)
ENTRY:	3.1 X 1.7m (10.1 X 5.5 ft)

SPECIFICATION



ELEVATION

For further information please contact:
 T: +44 (0)20 3411 9200 E: info@onedenmanplace.com
 One Denman Place London W1D 7AH