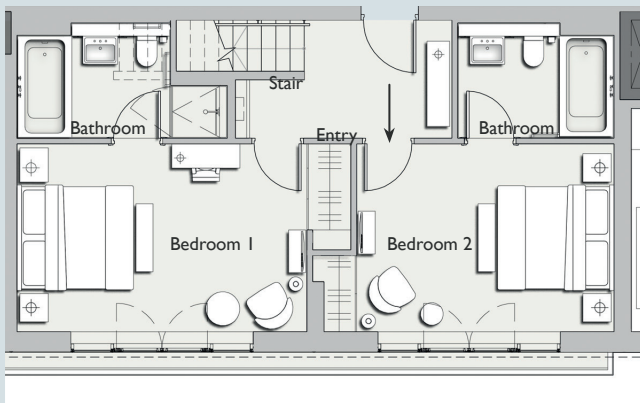


# ONE DENMAN PLACE



## APARTMENT 22

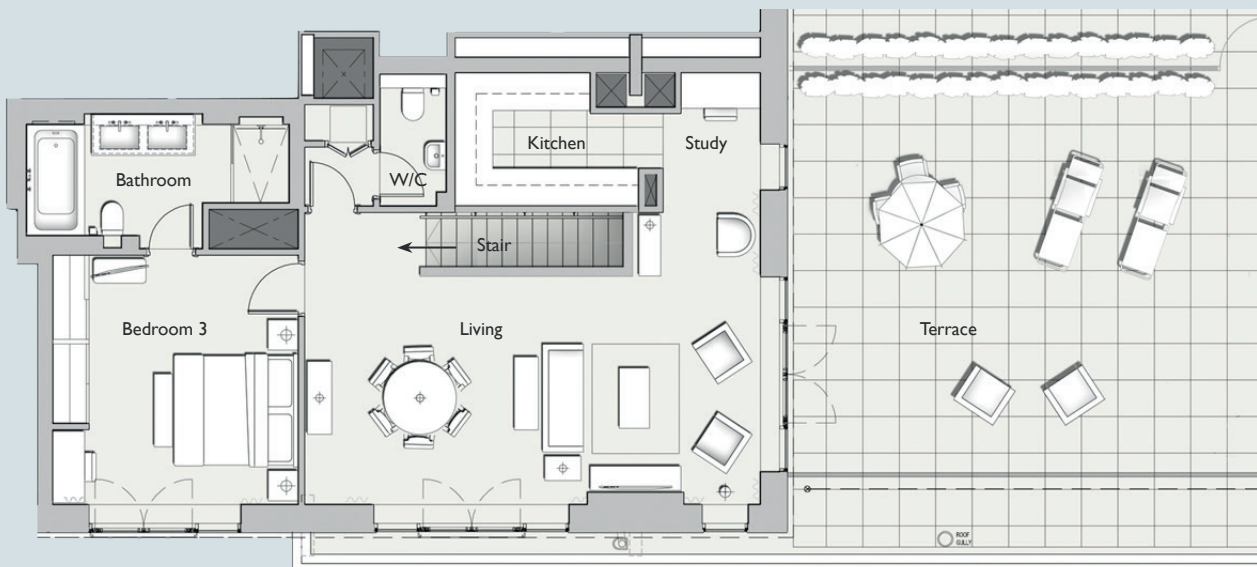
A 140m<sup>2</sup> (1,506 sq ft) 2 or 3 bedroom duplex apartment, which is light and airy with floor to ceiling windows and large terrace. The apartment has beautiful oak floors in the living spaces, a powder room and a sleek Boffi kitchen. The king size double bedrooms have ensuite bathrooms beautifully designed in marble and oak.



FLOORPLAN LOWER

APARTMENT SPECIFICATION	
GROSS INTERNAL AREA:	140m <sup>2</sup> (1,506 sq ft)
UPPER LEVEL:	82m <sup>2</sup> (882 sq ft)
UPPER TERRACE AREA:	49m <sup>2</sup> (527 sq ft)
LOWER LEVEL:	28m <sup>2</sup> (624 sq ft)
LOCATION:	Fifth and Sixth Floor
ASPECT:	Denman Street

SPECIFICATION



FLOORPLAN UPPER

# ONE DENMAN PLACE

ROOM DIMENSIONS	
BEDROOM 1:	5.1 X 3.3m (16.7 X 10.8 ft)
BATHROOM 1:	3.7 X 2.0m (12.0 X 6.5 ft)
ENTRY:	3.6 X 2.1m (11.7 X 6.8 ft)
BEDROOM 2:	4.5 X 3.3m (14.8 X 10.8 ft)
BATHROOM 2:	2.7 X 2.0m (8.9 X 6.6 ft)
BEDROOM 3:	4.4 X 4.0m (14.5 X 13.2 ft)
BATHROOM 3:	4.3 X 2.2m (14.1 X 7.2 ft)
W/C:	2.2 X 1.1m (7.1 X 3.5 ft)
KITCHEN:	3.4 X 2.2m (11.2 X 7.2 ft)
LIVING ROOM:	7.8 X 5.1m (25.6 X 16.8 ft)
STUDY:	2.3 X 1.6m (7.5 X 5.3 ft)
TERRACE:	7.7 X 6.6m (25.3 X 21.7 ft)

## SPECIFICATION



APARTMENT LOCATION



APARTMENT LOCATION



DIRECTION



ELEVATION