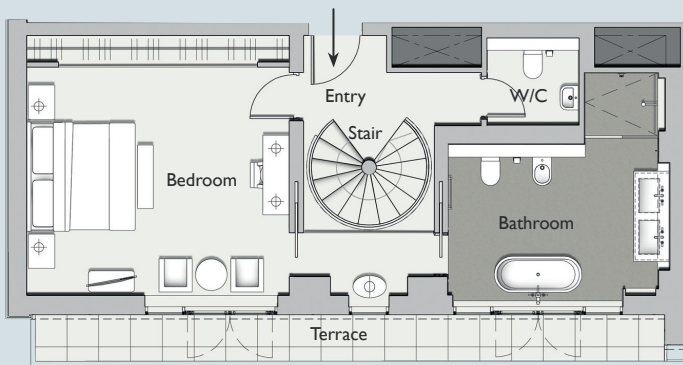


ONE DENMAN PLACE



APARTMENT 24

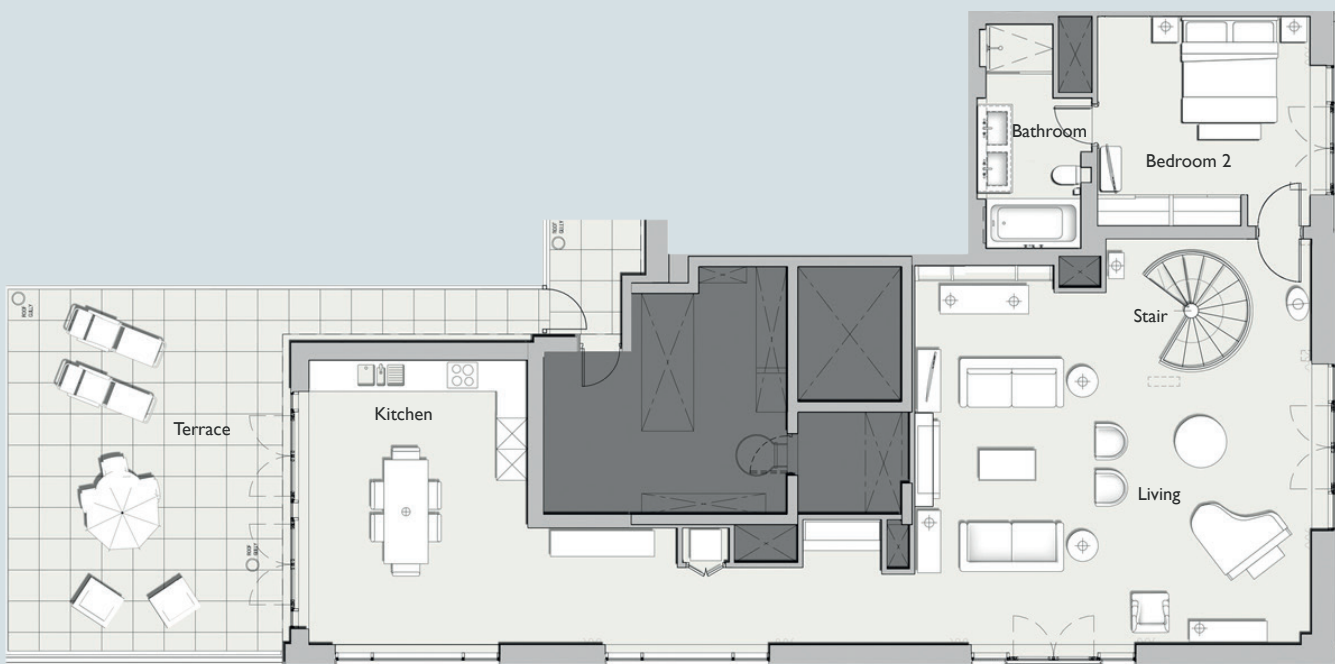
A 156m² (1,679 sq ft) 1 or 2 bedroom duplex apartment, which is light and airy with floor to ceiling windows and large terrace. The apartment has beautiful oak floors in the living spaces, a powder room and a sleek Boffi kitchen. The king size double bedrooms have an ensuite bathroom beautifully designed in marble and oak.



FLOORPLAN LOWER

APARTMENT SPECIFICATION	
GROSS INTERNAL AREA:	156m ² (1,679 sq ft)
UPPER LEVEL:	98m ² (1,055 sq ft)
UPPER TERRACE AREA:	43m ² (462 sq ft)
LOWER LEVEL:	58m ² (624 sq ft)
LOWER TERRACE AREA:	10m ² (108 sq ft)
LOCATION:	Fifth and Sixth Floor
ASPECT:	Dual Aspect

SPECIFICATION



FLOORPLAN UPPER

ONE DENMAN PLACE

ROOM DIMENSIONS	
BEDROOM:	5.0 × 4.9m (16.3 × 16.1 ft)
BATHROOM:	4.3 × 4.2m (14.1 × 13.7 ft)
LOWER ENTRY:	2.5 × 3.7m (8.1 × 12.2 ft)
W/C:	1.6 × 1.7m (5.4 × 5.7 ft)
LOWER TERRACE:	11.9 × 0.9m (39 × 2.9 ft)
LIVING ROOM:	8.0 × 8.0m (26.1 × 26.1 ft)
KITCHEN:	5.5 × 4.2m (17.9 × 13.8 ft)
UPPER TERRACE:	10.3 × 7.0m (33.7 × 22.8 ft)
BEDROOM 2:	4.4 × 4.0m (14.5 × 13.2 ft)
BATHROOM 2:	4.3 × 2.2m (14.1 × 7.2 ft)

SPECIFICATION



APARTMENT LOCATION



DIRECTION



APARTMENT LOCATION



DIRECTION



ELEVATION