



PASHMINA

LE REFUGE ★★★★★
MADE IN VAL THORENS

PRESENTATION OF THE HOTEL



Independently minded



PASHMINA

LE REFUGE ★★★★★
MADE IN VAL THORENS

SMALL
LUXURY
HOTELS
OF THE WORLD

Independently minded





PASHMINA

LE REFUGE ★★★★★
MADE IN VAL THORENS

SMALL
LUXURY
HOTELS
OF THE WORLD

Independently minded



VAL THORENS, THE PLACE TO SKI...

Val Thorens is a wonderful ski-resort, born with the energy and the conviction of some passionate people, who, as pioneers developed step by step what Val Thorens became : a ski-resort in a magnificent environment at the center of a wild white cirque, with excellent ski conditions from November till May, an atmosphere, a 'United' spirit winner in 2013, 2014, 2016 and 2017 of the «Best world's ski resort» award.

Ideally connected to the 3 Valleys ski resort, you will have the pleasure to discover more than 600 km of slopes with an innovating and well thought ski lift network, from Val Thorens to Courchevel, les Ménuires to Meribel. And there is so much to discover in ski touring or snowshoes.

Discover the ski-in gastronomy at la Bouitte of the MEILLEUR family (3 stars Michelin), at the gastronomic restaurant Les Explorateurs (1 star Michelin) and also at Chalet de la Marine (1 fork Michelin) or at la Folie Douce.

There is always something to do at Val Thorens, : ice driving, sledge, snow bike, mountain bike, parasailing, concerts, special events, international sport events.

WELCOME IN VAL THORENS !



PASHMINA

LE REFUGE ★★★★★
MADE IN VAL THORENS

SMALL
LUXURY
HOTELS
OF THE WORLD

Independently minded





Independently minded

DISCOVER PASHMINA...

Hotel PASHMINA is a real refuge, inspired by passionate and fascinating mountain people, pioneers and adventurers whose realizations are always beyond conventions.

PASHMINA is not just a new hotel in the luxury hotels galaxy. It is an experience, a feeling of weightlessness, a breath of pure fullness. Raw materials, stone and wood for a «inner mountain», a refuge in the heart of the great white cirque of Val Thorens which offers the 'end of the world' reachable. The luxury here is a philosophy. And it has rarely been easier.

Spa by L'OCCITANE over 450 sqm, two restaurants inspired by Josselin JEANBLANC, 1-star Michelin rewarded, ski-shop by GOITSCHERL, rooms and Suites up to 70 sqm, Cosy Home from 60 to 153 sqm, two apartments of 130 sqm, vast volumes for the restaurant and the bar.

Space, light, service and comfort are the watchwords of the GORINI family established in Val Thorens since more than forty years. Passionated, they welcome their guests with a human warmth and an uncommon natural attitude. Sharing time and experiences, offering the best of Val Thorens define the spirit of PASHMINA. It is evoking the places where the exploits are told, where the expeditions are prepared that is born the luxury refuge concept.

Le PASHMINA, an invitation to travel, a promise of memories.

Pashmîna, from persian "pashmîneh", surnamed «fiber gold» is one of the world's most precious wool. Made in Kashmir, this end of the world luxury symbol did inspire the name and logo of Hotel PASHMINA, the new refuge ***** made in Val Thorens.

WELCOME !



LE REFUGE

- 43 rooms and Suites up to 82 sqm : space and light for an absolute comfort.
- 8 « Cosy Home » from 60 to 153 sqm : a new concept of one, two, three or four bedrooms with en-suite bathrooms surrounding a living area with kitchen, dining and living room. The 5 stars vision of a Base Camp to share with friends and family the conviviality of a large living space, with the excellence of the hotel services, and a Traiteur Menu available.
- Restaurant le Base Camp, a clever vision of the mountain cooking.
- Restaurant Les Explorateurs for an authentic and user-friendly gourmet discovery, rewarded with one-star at the Guide Michelin in February 2017 and 2018.
- Bar and terrace le Deck, for lunch and after-ski.
- Aqua PASHMINA area over 450 sqm with indoor swimming-pool with mountain view, indoor and outdoor jacuzzi, Hot tub, sauna, Turkish bath, and PASHMINA Spa by L'OCCITANE with 5 treatment rooms, one of which is double.
- Fitness center, meeting room, library lounge, panoramic view smoking room, shop, ski-shop by GOITSCHERL, ski-in ski-out, garage.
- And for an exclusive experience : two IglooPod on the roof including one with private Hot tub, to sleep even closer to the stars.





PASHMINA

LE REFUGE ★★★★★
MADE IN VAL THORENS

SMALL
LUXURY
HOTELS
OF THE WORLD

Independently minded

LE BASE CAMP

LES
EXPLORATEURS 

TWO RESTAURANTS,
TWO ATMOSPHERES,
A SAME PHILOSOPHY

Chef Josselin JEANBLANC manages the kitchens of the Hotel Pashmina.

Rewarded with one star in the Guide Michelin for the gastronomic restaurant Les Explorateurs.
He proposes you a timeless culinary journey in a set inspired by the big high mountain expeditions.

Menu realized in association with Romuald FASSET, Meilleur Ouvrier de France.





PASHMINA

LE REFUGE ★★★★★
MADE IN VAL THORENS

SMALL
LUXURY
HOTELS
OF THE WORLD

Independently minded

THE ULTIMATE EXPERIENCE: THE IGLOOPOD



Two geodesic domes, including one with private Hot tub on the roof of PASHMINA, with sky view, invites you to sleep under the stars with comfort and well-being.

Large double bed, wood stove,
Bathroom with shower and toilets,
Exclusive view.



PASHMINA

LE REFUGE ★★★★★
MADE IN VAL THORENS

SMALL
LUXURY
HOTELS
OF THE WORLD

Independently minded

4 ELEGANCE ROOMS

- 20 sqm
- 1-2 people
- 180x200 double bed or twin beds
- 1 bathroom :
Shower
- East view balcony





PASHMINA

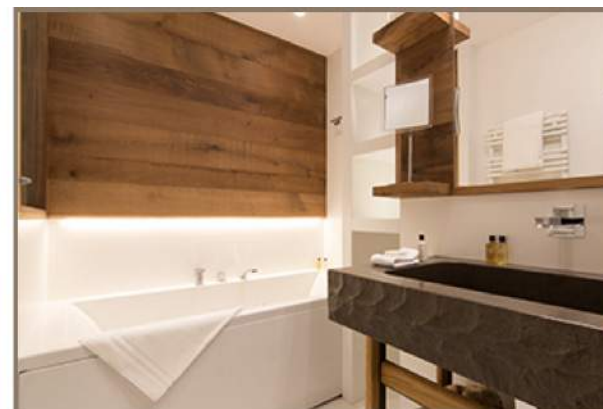
LE REFUGE ★★★★★
MADE IN VAL THORENS

SMALL
LUXURY
HOTELS
OF THE WORLD

Independently minded

4 EXCELLENCE ROOMS

- 25 sqm
- 1-3 people
- 180x200 double bed or twin beds
- 1 bathroom :
Bathtub
- Lounge with 90x200 bed
- East view balcony





PASHMINA

LE REFUGE ★★★★★
MADE IN VAL THORENS

SMALL
LUXURY
HOTELS
OF THE WORLD

Independently minded

19 JUNIOR SUITES

- 36 sqm
- 1-2 people
- 180x200 double bed or twin beds
- 1 bathroom :
Bathtub
Shower
- Dressing closets
- Lounge with large design couch
- Balcony (except 8th floor)





PASHMINA

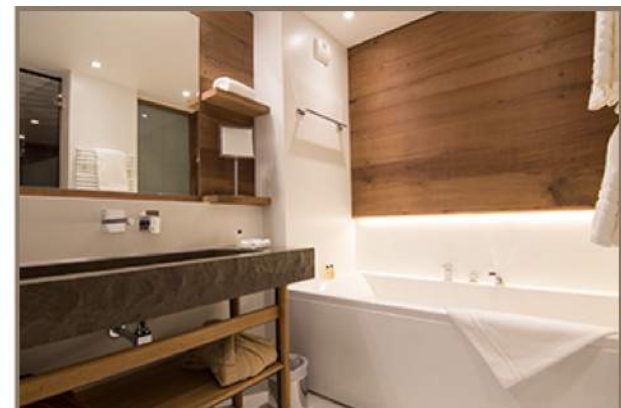
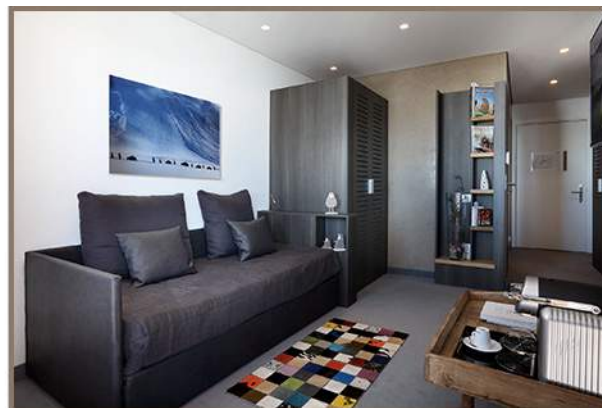
LE REFUGE ★★★★★
MADE IN VAL THORENS

SMALL
LUXURY
HOTELS
OF THE WORLD

Independently minded

6 TRIPLE ROOMS

- 36 sqm
- 1-3 people
- 180x200 double bed or twin beds
- 1 bathroom :
Bathtub
- 1 bathroom :
Shower
- Dressing closets
- Lounge with 90x200 bed
- Balcony (except 8th floor)





PASHMINA

LE REFUGE ★★★★★
MADE IN VAL THORENS

SMALL
LUXURY
HOTELS
OF THE WORLD

Independently minded

2 JUNIOR SUITES XL

- 45 sqm
- 2-4 people
- 180x200 double bed or twin beds
- 1 bathroom :
Bathtub
Shower
- Dressing closets
- Lounge with sofa-bed for 2 people (160x195)
- Wood stove
- South view balcony





PASHMINA

LE REFUGE ★★★★★
MADE IN VAL THORENS

SMALL
LUXURY
HOTELS
OF THE WORLD

Independently minded

4 TRIPLE ROOMS XL

- 44 sqm
- 2-3 people
- Large 200x200 double bed
- 1 bathroom :
Bathtub
Shower
- Dressing closets
- Lounge with large design couch
- Cabin bedroom or mountain bed 90x200
- South view balcony





PASHMINA

LE REFUGE ★★★★★
MADE IN VAL THORENS

SMALL
LUXURY
HOTELS
OF THE WORLD

Independently minded

1 FAMILY ROOM

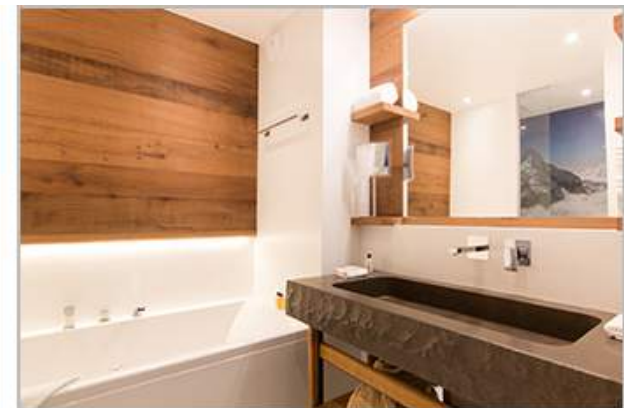
- 44 sqm
- 2-4 people
- Lounge with large design couch

ROOM 1

- 180x200 double bed or twin beds
- 1 bathroom :
Bathtub
Shower

ROOM 2

- 180x200 double bed or twin beds
- 1 bathroom :
Shower





PASHMINA

LE REFUGE ★★★★★
MADE IN VAL THORENS

SMALL
LUXURY
HOTELS
OF THE WORLD

Independently minded

2 PRESTIGE SUITES XXL

- 70 sqm
- 4 people
- Independent lounge (20 sqm) with large couch
- Private Turkish Bath
- Wood stove or balcony

ROOM 1 (22 sqm)

- Large 200x200 double bed
- 1 bathroom :
Bathtub

ROOM 2 (20 sqm)

- 180x200 double bed or twin beds
- 1 bathroom :
Bathtub or Shower



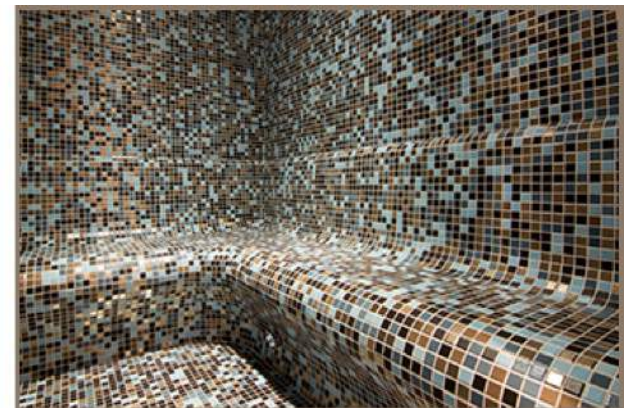


PASHMINA

LE REFUGE ★★★★★
MADE IN VAL THORENS

SMALL
LUXURY
HOTELS
OF THE WORLD

Independently minded





PASHMINA

LE REFUGE ★★★★★
MADE IN VAL THORENS

SMALL
LUXURY
HOTELS
OF THE WORLD

Independently minded

1 FAMILY SUITE 3 BEDROOMS

- 82 sqm
- 6 people
- 29 sqm living area with lounge, dining room and fitted kitchen
- Wood stove
- South view balcony

ROOM 1 AND 2 (15 sqm)

- 180x200 double bed or twin beds
- 1 bathroom :
Shower

ROOM 3 (15 sqm)

- 180x200 double bed or twin beds
- 1 bathroom :
Bathtub





PASHMINA

LE REFUGE ★★★★★
MADE IN VAL THORENS

SMALL
LUXURY
HOTELS
OF THE WORLD

Independently minded

COSY HOME 1 BEDROOM SARANGHI

- 60 sqm
- 2-4 people
- 180x200 double bed or twin beds
- 1 bathroom :
Jacuzzi bathtub
- Dressing
- 30 sqm living area with lounge, dining room
and fitted kitchen
- Sofa-bed for 2 people (160x195)
- Wood stove
- South view balcony





PASHMINA

LE REFUGE ★★★★★
MADE IN VAL THORENS

SMALL
LUXURY
HOTELS
OF THE WORLD

Independently minded

COSY HOME 2 BEDROOMS MAKALU

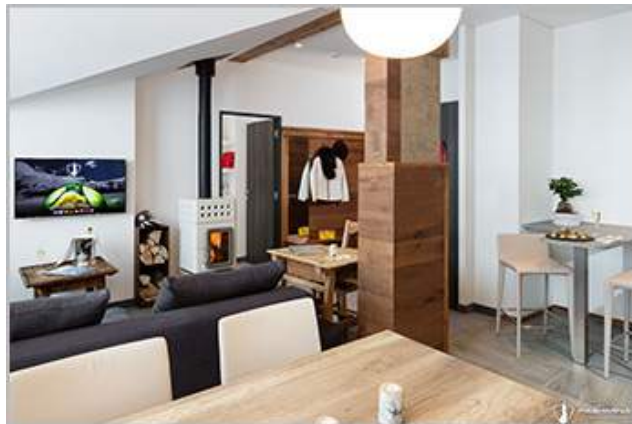
- 65 sqm
- 4 people
- 31 sqm living area with lounge, dining room and fitted kitchen
- Wood stove

ROOM 1 (17 sqm)

- 180x200 double bed or twin beds
- 1 bathroom :
Shower

ROOM 2 (17 sqm)

- 180x200 double bed or twin beds
- 1 bathroom :
Bathtub





PASHMINA

LE REFUGE ★★★★★
MADE IN VAL THORENS

SMALL
LUXURY
HOTELS
OF THE WORLD

Independently minded

COSY HOME 2 BEDROOMS MANDALA

- 70 sqm
- 4-6 people
- 34 sqm living area with lounge, dining room and fitted kitchen
- Sofa-bed for 2 people (160x195)
- South view balcony

ROOM 1 (19 sqm)

- 180x200 double bed or twin beds
- 1 bathroom :
Shower

ROOM 2 (17 sqm) mezzanine

- 180x200 double bed or twin beds
- 1 bathroom :
Bathtub



RDC



N+1



PASHMINA

LE REFUGE ★★★★★
MADE IN VAL THORENS

SMALL
LUXURY
HOTELS
OF THE WORLD

Independently minded





PASHMINA

LE REFUGE ★★★★★
MADE IN VAL THORENS

SMALL
LUXURY
HOTELS
OF THE WORLD

Independently minded

COSY HOME 2 BEDROOMS XL LHOTSE

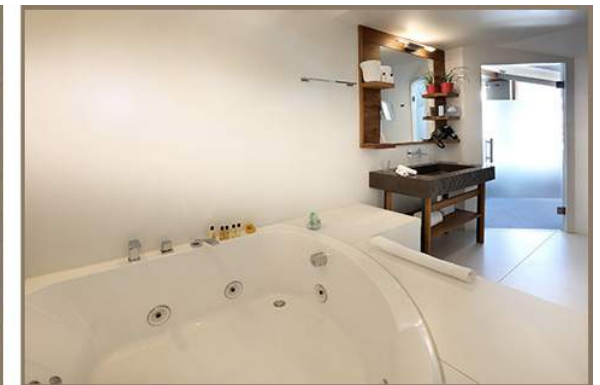
- 85 sqm
- 4-5 people
- 30 sqm living area with lounge, dining room and fitted kitchen
- Private Turkish Bath
- Sleeping booth with 90x200 bed
- Wood stove

ROOM 1 (24 sqm)

- 180x200 double bed or twin beds
- 1 bathtub :
Shower
Jacuzzi bathtub

ROOM 2 (14 sqm)

- 180x200 double bed or twin beds
- 1 bathroom :
Shower





PASHMINA

LE REFUGE ★★★★★
MADE IN VAL THORENS

SMALL
LUXURY
HOTELS
OF THE WORLD

Independently minded

COSY HOME 3 CHALET DIAMIR

- 3 storeys Cosy Home in an independent chalet, 130 m², 6-8 personnes
- 43 sqm living area with lounge, dining room and fitted
- Private Turkish bath with shower at the ground floor.
- Wood stove or fireplace
- Lounge with sofa-bed for 2 people (160x195)

ROOM 1 – GROUND FLOOR

- 180x200 double bed or twin beds
- 1 bathroom :
Bathtub
- Separate toilets

ROOM 2 - 2nd FLOOR

- 180x200 double bed or twin beds
- 1 bathroom :
Douche
- Separate toilets

ROOM 3 - 2nd FLOOR

- 180x200 double bed or twin beds
- 1 bathroom :
Shower and Bathtub
- South view balcony
- Separate toilets







PASHMINA

LE REFUGE ★★★★★
MADE IN VAL THORENS

SMALL
LUXURY
HOTELS
OF THE WORLD

Independently minded

COSY HOME 3 BEDROOMS XXL LADAKH

- 120 sqm
- 6 people
- 60 sqm living area with lounge, dining room and fitted kitchen
- Fireplace
- Two large Design couches
- Amazing south view balcony

ROOM 1 (27 sqm)

- 180x200 double bed or twin beds
- Fireplace
- 1 bathroom :
Jacuzzi bathtub
Douche

ROOM 2 (11 sqm)

- 180x200 double bed or twin beds
- 1 bathroom :
Shower

ROOM 3 (14 sqm)

- 180x200 double bed or twin beds
- 1 bathroom :
Shower





PASHMINA

LE REFUGE ★★★★★
MADE IN VAL THORENS

SMALL
LUXURY
HOTELS
OF THE WORLD

Independently minded

COSY HOME 3 BEDROOMS XXL ANNA PURNA

- 135 sqm
- 6-8 people
- 67 sqm living area with lounge, dining room and fitted kitchen
- Fireplace
- One couch and one sofa-bed for 2 people (160x195)
- Private Turkish Bath
- Amazing south view balcony

ROOM 1 (15 sqm)

- 180x200 double bed or twin beds
- 1 bathroom :
Shower
Bathtub

ROOM 2 AND 3 (15 sqm)

- 180x200 double bed or twin beds
- 1 bathroom :
Shower





PASHMINA

LE REFUGE ★★★★★
MADE IN VAL THORENS

SMALL
LUXURY
HOTELS
OF THE WORLD

Independently minded

COSY HOME 4 BEDROOMS XXL EVEREST

- 153 sqm
- 8-10 people
- 67 sqm living area with lounge, dining room and fitted kitchen
- Fireplace
- One couch and one sofa-bed for 2 people (160x195)
- Private Turkish Bath
- Amazing south view balcony

ROOM 1 (15 sqm)

- 180x200 double bed or twin beds
- 1 bathroom :
 - Shower
 - Bathtub

ROOM 2 AND 3 (15 sqm)

- 180x200 double bed or twin beds
- 1 bathroom :
 - Shower

ROOM 4 (15 sqm)

- 180x200 double bed or twin beds
- 1 bathroom :
 - Bathtub





PASHMINA

LE REFUGE ★★★★★
MADE IN VAL THORENS

SMALL
LUXURY
HOTELS
OF THE WORLD

Independently minded

AQUA PASHMINA - SPA BY L'OCCITANE





PASHMINA

LE REFUGE ★★★★★
MADE IN VAL THORENS

SMALL
LUXURY
HOTELS
OF THE WORLD

Independently minded

BAR - RESTAURANTS





PASHMINA

LE REFUGE ★★★★★
MADE IN VAL THORENS

SMALL
LUXURY
HOTELS
OF THE WORLD

Independently minded

RECEPTION





PASHMINA

LE REFUGE ★★★★★
MADE IN VAL THORENS

SMALL
LUXURY
HOTELS
OF THE WORLD

Independently minded

SERVICES

- Calm and preserved location nearby the city center, ski-in, ski-out.
- Private covered car park upon reservation and availabilities, 24 € per day.
- Bar with fireplace, panoramic view smoking room and terrace by the slopes.
- «Base Camp» restaurant and «Explorateurs» gastronomic restaurant (1 star Michelin), managed by Josselin JEANBLANC.
- Aqua PASHMINA area with indoor swimming-pool, solarium, Hot tub, sauna, Turkish bath, indoor and outdoor Jacuzzi.
- PASHMINA Spa by L'OCCITANE with 5 treatments cabins (one double).
- Ski-shop by GOITSCHER with ski-in ski-out access, ski lockers, shoes dryer and equipment rental.
- **IglooPod EXPERIENCE.**

Also :

- 24/24 Reception
- Concierge services
- Valet service, valet parking
- Shuttle service (in Val Thorens)
- Library lounge
- 'Les Colporteurs' shop
- Fitness center
- Complimentary newspapers and magazines
- Meeting room for up to 45 people
- Business center
- Room Service
- Traiteur Menu for «Home»
- Complimentary Wi-fi
- Complimentary VOD



Independently minded

CONTACT

Operation Manager

Philippe BAPPEL

direction@hotelpashmina.com

Rooms Division Manager

Alexis THOMAS

info@hotelpashmina.com

Communication Manager

Audrey MASSON

audrey@hotelpashmina.com

PASHMINA

LE REFUGE ***** MADE IN VAL THORENS

Place du Slalom 73440 VAL THORENS – France

Tel : +33 (0)4 79 000 999

www.hotelpashmina.com — info@hotelpashmina.com

SARL PASHMINA - SIRET 81000016 – RCS Chambéry – APE 5510Z - TVA intracommunautaire FR 25 810 559 617

