



FACT SHEET



“ARRIVE AS A GUEST, DEPART AS A FRIEND AND RETURN AS FAMILY”

NAME OF RESORT : SAMABE BALI SUITES & VILLAS
 RESORT ADDRESS : JL. PURA BARONG-BARONG SAWANGAN,
 NUSA DUA SELATAN, BALI, 80363,
 INDONESIA
 TELEPHONE : + 62 361 846 8633
 FAX : + 62 361 846 8632
 GENERAL EMAIL : mail@samabe.com
 RESORT WEBSITE : www.samabe.com
 GENERAL MANAGER : RALF LUTHE
 RESORT CATEGORY : 5-STAR LUXURY BEACH RESORT

CHECK-IN TIME : 14.00 hour
 CHECK-OUT TIME : 12.00 hour
 CREDIT CARD : VISA/MASTER/AMEX
 ACCEPTED
 OPENING DATE : 01 JUNE 2013



LOCATION : SOUTHERN PART OF NUSA DUA
 INTERIOR DESIGNER : MANNY SAMSON & ASSOCIATES
 MASTER PLAN ARCHITECT : BENSLEY DESIGN STUDIO, THAILAND
 ACCOMODATION : 81 LUXURIOUS SUITES & VILLAS; 39 SUITES,
 7 PENTHOUSE VILLAS, 35 FREE STANDING VILLAS
 NUMBER OF FLOORS : 4TH FLOORS OF SUITES
 TOTAL AREA : 8 HECTARES
 DISTANCE : FROM NGURAH RAI BALI'S INTERNATIONAL
 AIRPORT TO SAMABE BALI SUITES & VILLAS
 APPROX. 17 KM

POINT OF INTEREST

BALI GOLF & COUNTRY CLUB	: 3.8 KM	SEMINYAK	: 29 KM
BICC	: 5.5 KM BY PANTAI MENGIAT, 7 KM BY JL. SILIGITA	SANUR	: 31.5 KM
ULUWATU (TEMPLE)	: 17 KM	TANAH LOT	: 38.5 KM
KUTA	: 18 KM	UBUD	: 52 KM
BENOA HARBOR	: 24 KM USING BYPASS NGURAH RAI	PADANG BAI HARBOR	: 70 KM
		BEDUGUL	: 73.5 KM



FACT SHEET

- GENERAL FACILITIES & SERVICES -

FACILITIES & SERVICES	AVAILABILITY
FINE DINING	✓
IN - VILLA DINING	✓
24 HOURS BUTLER SERVICE	✓
FREE WI-FI	✓
SWIMMING POOL	✓
FITNESS & GYM TRACK	✓
WATER SPORTS	✓
KIDS CLUB	✓
BABYSITTING SERVICE	✓
SPA	✓
IN-VILLA MASSAGE	✓
COOKING CLASS	✓
LIBRARY	✓
MINI CINEMA	✓
CAR RENTAL	✓
BICYCLES	✓
LAUNDRY FACILITY	✓
ELECTRONIC CART (BUGGY)	✓
LUGGAGE STORAGE	✓
PRIVATE BEACH (ACCESSIBLE BY STAIR CASE AND BEACH INCLINATOR)	✓
MICE, EVENT & WEDDING VENUES	✓
WEDDING & EVENT SERVICES	✓
MARRIAGE PROPOSAL IDEAS	✓
CULTURAL & LEISURE ACTIVITIES	✓
SAMABE HOSPITALITY LOUNGE	✓
ON CALL MEDICAL ASSISTANCE	✓



A : LOBBY AREA, TE.JA.CO, REMPAH - REMPAH RESTAURANT
HOSPITALITY LOUNGE

B : GREEN LAGOON, STAGE, LUMBA-LUMBA KID'S CLUB

C : C1. GALANGAL SPA, C2. CANANG MEETING ROOM,
C3. TIMELESS

D : VILLA 33 - 41, ROYAL SAMABE RESIDENCE

E : VILLA 16 - 18

F : VILLA 11 - 15

G : VILLA 19 - 32

H : VILLA 43 - 46

I : EAST SUITES

J : WEST SUITES

K : CRYSTAL BLUE OCEAN GRILL

L : RING OF FIRE

M : MAIN POOL

N : GYM

O : STAIRS TO THE BEACH

P : MOTORCYCLE PARKING AREA

Q : WANTILAN COOKING CLASS

R : CAR PARKING AREA

S : PEARL CHAPEL,

LIFT TO THE BEACH (09:00 - 22.00 HOURS)

T : TAMAN BARONG - BARONG

U : ENTRANCE

V : SILENT WEST

W : SAMABE BEACH (EAST SIDE)

X : BEACH CAVE DINING

Y : BEACH FOAM PARTY



FACT SHEET

- ROOM FEATURES -

FACILITIES & SERVICES	AVAILABILITY
AIR CONDITIONING	✓
LCD FLAT SCREEN TV 42 INCH	✓
IN-ROOM PERSONAL SAFE	✓
I-POD DOCKING STATION	✓
PILLOWS MENU SELECTION	✓
CUSTOM-DESIGNED MATTRESSES	✓
DVD PLAYER	✓
CABLE TV	✓
ADJUSTABLE THERMOSTAT	✓
SEPARATE SHOWER/BATHTUB	✓
IN-ROOM TELESCOPE (SUITE & PENTHOUSE ONLY)	✓
IDD TELEPHONE	✓
HAIRDRYER	✓
PRIVATE MINI BAR	✓
COMPLIMENTARY COFFEE & TEA	✓
BUTLER SERVICE	✓
24-HOURS HOUSEKEEPING	✓
WIFI/LAN CONNECTION	✓
IRON ON REQUEST	✓
IRON BOARD ON REQUEST	✓
ELECTRONIC LOCKS	✓
ELECTRONIC SMOKE DETECTOR	✓
SIGNATURE AROMA TOILETRIES	✓
CONVENIENT ELECTRICAL OUTLETS	✓



FACT SHEET

- ROOM CATEGORIES -

OCEAN FRONT SAMABE SUITE

24-hour butler, private balcony, complimentary Wi-Fi, ocean view, telescope

With unsurpassed ocean view and attention to detail in its design, the 135 square meters Ocean Front Samabe Suite represents true luxury in holiday accommodation. Each suite includes a king size bed, a separate living room and a balcony with a large sitting and outdoor dining area wrapped in a picturesque panorama of the Indian Ocean. It is also supplied with a telescope, if you feel like somestargazing in the night.

- Beds : 1 x King Size Bed (200 x 200 cm)
- Occupancy : 2 Adults + 1 Child, or 3 Adults
- View : Ocean Front
- Location : On the 1st and 2nd floor of West Wing (only)
- Size : 135 square meters

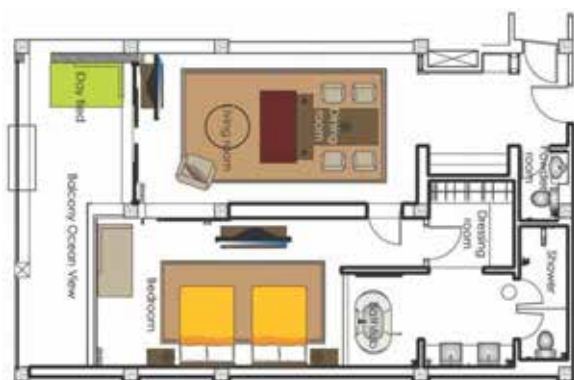


OCEAN FRONT FAMILY SUITE

24-hour butler, private balcony, complimentary Wi-Fi, ocean view, telescope

The spacious Ocean Front Family Suites area comfortable choice for families, each with cozy living area separate from the bedroom which contains two queen size beds. Every suite has a generous balcony with a large sitting and dining area with uninterrupted ocean views. Have fun watching the stars at night and keep a look out for a shooting star through a telescope provided in every suite.

- Beds : 2 x Queen Size Bed (160 x 200 cm)
- Occupancy : 3 Adults + 1 Child, 2 Adults + 2 Children, or 4 Adults
- View : Ocean Front
- Location : On the 1st and 2nd floor, East Wing or West Wing
- Size : 135 square meters





FACT SHEET

- ROOM CATEGORIES -

OCEAN FRONT HONEYMOON SUITE

24-hour butler, private balcony, complimentary Wi-Fi, ocean view, telescope

The Ocean Front Honeymoon Suites represents luxury and romance, all with uninterrupted views of the Indian Ocean. Enjoy romantic bath relishing the breathtaking panorama of the calming sea with the beauty of the ocean and the sky revealed right before your eyes. Each of the Ocean Front Honeymoon Suite has a generous balcony with a large sitting. Gaze at the starry night sky and keep a look out for a shooting star with a telescope provided in every suite.

- Beds : 1 x King Size Bed (200 x 200 cm)
- Occupancy : 2 Adults + 1 Child or 3 Adults
- View : Ocean Front
- Location : On the 1st and 2nd floor, East Wing or West Wing
- Size : 135 square meters



OCEAN FRONT SAMABE POOL SUITE

24-hour butler, private pool, private balcony, complimentary Wi-Fi, ocean view, telescope

Supreme leisure and luxury, the 180 square meters Ocean Front Samabe Pool Suite is just perfect to spoil yourself and experience a holiday of a lifetime. It features a king size bed, separate living room, a balcony with an outdoor dining area and a private swimming pool overlooking turquoise waters of the Indian Ocean. A telescope is included for late night stargazing.

- Beds : 1 x King Size Bed (200 x 200 cm)
- Occupancy : 3 Adults or 2 Adults + 1 Child
- View : Ocean Front
- Location : On the ground floor of West Wing (only)
- Size : 180 square meters (including a 6 x 3 meters private pool and garden)





FACT SHEET

- ROOM CATEGORIES -

OCEAN FRONT FAMILY POOL SUITE

24-hour butler, private pool, private balcony, complimentary Wi-Fi, ocean view, telescope

The stylish Ocean Front Family Pool Suites with two queen size beds and separate living room provide ample of space to accommodate the whole family. Each suite comes with a private pool of 6 x 3 meters and a balcony with sitting and dining with a flawless oceanic panorama. Family may have fun with a telescope provided in the room enjoying the stars at night.

- Beds : 2 x Queen Size Bed (160 x 200 cm)
- Occupancy : 3 Adults + 1 Child, 2 Adults + 2 Children or 4 Adults
- View : Ocean Front
- Location : On the Ground Floor, East Wing or West Wing.
- Size : (including a 6 x 3 meters private pool and garden)



OCEAN FRONT HONEYMOON POOL SUITE

24-hour butler, private pool, private balcony, complimentary Wi-Fi, ocean view, telescope

The sumptuous, elegant Ocean Front Honeymoon Pool Suites boast magnificent view of the Indian Ocean and a private swimming pool. Charming suites feature glass-surround bathrooms overlooking the ocean. A telescope is provided in every suite for guests to gaze at the starry sky in the night. Take a dip in the private pool with your loved one and enjoy an intimate romantic holiday.

- Beds : 1 x King Size Bed (200 x 200 cm)
- Occupancy : 2 Adults + 1 Child or 3 Adults
- View : Ocean Front
- Location : On the Ground Floor, East Wing or West Wing.
- Size : 180 square meters (including a 6 x 3 meters private pool and garden)



ONE BEDROOM GARDEN POOL VILLA

24-hour butler, private terrace, private pool, garden view, complimentary Wi-Fi

Measuring 265-square meter, One-Bedroom Family Garden Pool Villa is an elegant and contemporary accommodation that puts forward privacy and comfort feel. Each villa includes a luxurious King Size bed with custom-designed mattress. The walk-through dressing room leads to a spacious bathroom with a free-standing bath-tub, toilet room, and indoor shower. A spacious 8 x 4 meter pool and beautiful garden views are absolute indulgence.

- Beds : 1 x King Size Bed (200 x 200 cm)
- Occupancy : 3 Adults or 2 Adults + 1 Child
- View : Garden view
- Location : Free Standing
- Size : 265 square meters (with 8 x 4 meters private pool)
- Total : 2 units



TWO BEDROOM GARDEN POOL VILLA

24-hour butler, private terrace, private pool, garden view, complimentary Wi-Fi

Two-Bedroom Family Garden Pool Villa includes a master bedroom with 1 King Size bed and the second bedroom with two Single beds, all with custom-designed mattresses, in a 298-square meter area. The luxury Bali villa facilities include Wi-Fi/LAN connection, signature aroma toiletries, iPod docking station, 32" Flat Screen LCD TV in each bedroom and 42" in your living room, and a DVD player with a collection of movies from our library.

- Beds : 1 x King Size Bed (200 x 200 cm) in Master Bedroom, 2 x single Bed (120 x 200 cm) in the Second Bedroom
- Occupancy : 4 Adults + 1 Child or 5 Adults
- View : Garden view
- Location : Free Standing
- Size : 298 square meters (with 8 x 4 meters private pool)





FACT SHEET

- ROOM CATEGORIES -

ONE-BEDROOM OCEAN POOL VILLA

24-hour butler, private terrace, private pool, partial ocean view, complimentary Wi-Fi

Measuring 265-square meters. One-Bedroom Ocean Pool Villa is an elegant and contemporary accommodation that puts forward privacy and comfort feel. Each villa includes a luxurious King Size bed with custom-designed mattress. The walk-through dressing room leads to a spacious bathroom with a free-standing bath-tub, toilet room and indoor shower. A spacious 8 x 4 meters pool and beautiful ocean view are absolute indulgence.

- Beds : 1 x King Size Bed (200 x 200 cm)
- Occupancy : 3 Adults or 2 Adults + 1 Child
- View : Partial Ocean View over Balinese thatched roof
- Location : Free Standing
- Size : 265 square meters (with 8 x 4 meters private pool)



TWO-BEDROOM OCEAN POOL VILLA

24-hour butler, private terrace, private pool, partial ocean view, complimentary Wi-Fi

Two-Bedroom Ocean Pool Villa includes a master bedroom with 1 King Size bed and the second bedroom with two single beds, all with custom-designed mattresses, in a 298-square meter area. The luxury Bali facilities include Wi-Fi/LAN connection, signature aroma toiletries, iPod docking station, 32" Flat Screen TV in each bedroom and 42" in your living room, and a DVD player with a collection of movies from our library.

- Beds : 1 x King Size Bed (200 x 200 cm) in Master Bedroom, 2 x Single Bed (120 x 200 cm) in the Second Bedroom + 1 Day Bed
- Occupancy : 4 Adults + 1 Child or 5 Adults
- View : Partial Ocean View over Balinese thatched roof and resort garden
- Location : Free Standing
- Size : 298 square meters (with 8 x 4 meters private pool)





FACT SHEET

- ROOM CATEGORIES -

TWO-BEDROOM PENTHOUSE POOL VILLA

24-hour butter, private terrace, private infinity pool, full ocean view, complimentary Wi-Fi, telescope

The Two-Bedroom Penthouse Pool Villa nestles on the top of the suites buildings, representing the very best in the luxury Bali beach resort. Every penthouse measures a generous 304-square meter and is blessed with unparalleled view of the ocean. Indulgent, intimate, romantic and totally private, the interior of each villa reflects a discerning taste and artistic flair - a harmonious blend of contemporary style with touches of Balinese craftsmanship to create achic balance of East-meets-West.

- Beds : 1 x King Size Bed (200 x 200 cm) in Master Bedroom, 2 x Single Beds (120 x 200 cm) in the Second Bedroom
- Occupancy : 4 Adults + 1 Child or 5 Adults
- View : Full Ocean
- Location : On top floor cliff suites building
- Size : 304 square meters (with 5.5 x 4 meters private pool)
- Total : 6 units

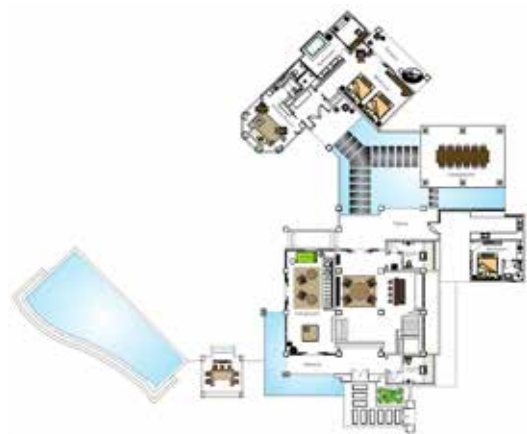


ROYAL SAMABE RESIDENCE

24-hour butter, private terrace, private pool, partial ocean view, complimentary Wi-Fi

This palatial two-storeys Royal Samabe Residence, complemented by high-tech modern amenities and glorious ocean view, will quench your thirst for cliff-top island living. Royal Samabe Residence, measuring 1,500 square meters, with its two bedrooms, two master bathrooms, living and dining room, bar, and three guest powder rooms, is ideal for entertaining kings and queens heads of states and families who appreciate the finest in life. With all top facilities, Royal Samabe Residence is also a resourceful site for private events and parties.

- Beds : 1 x King Size Bed (200 x 200 cm) in Master Bedroom, 2 x Single Bed (120 x 200 cm) in the Second Bedroom
- Occupancy : 4 Adults + 2 Children or 6 Adults
- View : Panoramic Views of the Ocean
- Location : Adjacent to Pearl Chapel
- Size : 1,500 square meters with a private pool





Location : Next to lobby area
Hours of operation : 12.00 – 21.00 Hrs
No. of treatment rooms : 2 Spa Treatment Rooms

Rejuvenate your body and mind, and find your balance at Galangal Spa. Our two spa treatment rooms are located in the building next to the lobby. Galangal Spa offers a wide variety of treatments and massages to suit your need. After treatment, relax in the outdoor sunken tub filled with flower petals. Incense sticks and lit scented candles by the tub help soothe your mind. Organic juice or Herbal Tea is offered with spa retreat programs. Leave your spa room in good spirit!



FACT SHEET

- ROOM BENEFITS -

LIMITED PRIVILEGES (STANDARD BENEFITS)	UNLIMITED PRIVILEGES (LUXURY ALL INCLUSIVE)*
<ul style="list-style-type: none"> 01. Welcome drink & cold towel upon check-in 02. Daily buffet breakfast in Rempah-Rempah Restaurant or in-room breakfast or Floating Breakfast in your private pool suite or villa 03. Daily free-flow non alcoholic beverages at any of the open restaurants and bars 04. Complimentary one time daily replenished mini bar, stocked with beer and soft drinks 05. Daily afternoon tea served in beach cave starting from 14.30 to 17.00 hours 06. Daily turn down service and daily changing fresh fruit amenities in your room 07. Daily complimentary yoga at the beach side 08. Daily fruit service at the pool side (15.00 hours) 09. Daily ice cream service for children at the pool side (15.00 hours) 10. Daily cooling cucumber eye compress at the pool side (15.00 hours) 11. Gym, cooking class and other guest activities included 12. Complimentary wireless Internet access in your room and resort area 13. Samabe original welcome gift for each guest & 24 hour butler service 14. Unlimited use of non-motorized water sports (catamaran/kayak/windsurfer, snorkeling , stand up - paddle) 	<ul style="list-style-type: none"> 01. All of the benefits under Limited Privileges 02. Daily cocktail hours including beers, house wines and standard spirits from 17.00 until 24.00 hours (midnight) 03. Daily 24-hour a la carte selection of Gourmet Organic Mediterranean or Balinese Cuisine served either in your suite or villa or anywhere within the resort (Except New Year Gala Dinner on 31 of December) 04. Daily one Samabe Signature Activity of your choice. 05. Unlimited laundry service (except dry cleaning) 06. Daily 6 hours complimentary use of meeting room and facilities (for up to 8 persons) - (Minimum stay of 3 nights or more)

UNIQUE BREAKFAST: ANYTIME, ANYWHERE WITHIN THE RESORT



FACT SHEET

- DINING & ENTERTAINMENT -

1. REMPANH-REMPAH MAIN DINING ROOM



Location : next to the lobby / main area
Hours of operation : 06.00 – 23.00 hours
Seating Capacity : 110 persons (outdoor & indoor)
Concept : Rempah – Rempah is the main dining of the resort. Designed with rich stone and timber with stunning backdrop of lush greenery and water ponds, Rempah - Rempah Restaurant proudly displaying the richness of various Indonesian spices. Opens for all day dining serving Balinese, Asian and Mediterranean Cuisines. Private dining area called "Banten" is also available for private function for up to 24 persons.

2. CRYSTAL BLUE OCEAN GRILL



Location : By the pool side overlooking to the spectacular Indian Ocean
Hours of operation : 11.00 – 23.00 hours
Seating Capacity : 65 persons
Concept : Open Air Style Restaurant with Balinese Thatched Roof specializing in fresh seafood, sushi and succulent steaks. The largest individual seating area is 20-seat open air teakwood deck.

5. IN-ROOM DINING

Location : In the privacy of suite or villa
Hours of operation : 24-hour Daily
Seating Capacity : 81 suites and villas
Concept : F&B service to all rooms serving international & local cuisines

3. TE.JA.CO LOUNGE & BAR



Location : In the main building overlooking to the beach and Indian Ocean
Hours of operation : 11.00 – 02.00 hours
Seating Capacity : 40 persons
Concept : Lobby Lounge cultivating a rich modern Asian Ambience serving a uniquely 3 elements: TE as traditional tea, JA as traditional Indonesian herbal drink or called *Jamu* and CO as coffee with selection of Indonesian Coffee and a variety of Indonesian Snacks to accompany the drinks.

4. RING OF FIRE POOL BAR



Location : At the pool side overlooking the spectacular Indian Ocean
Hours of operation : 10.00 – 23.00 hours
Seating Capacity : 21 persons
Concept : Casual bar catered for alcoholic and non alcoholic drinks selection while enjoying the stunning ocean view and the pool. The romantic torches in the evening really sets this bar to be the place for having pre or after dinner drinks.



FACT SHEET

- FACILITIES-

1. HOSPITALITY LOUNGE



Location : Near lobby area
 Hours of operation : 24-hours
 Concept : Library, small meeting area, mini cinema and 3 shower facilities

2. 24 HOURS GYM



Location : Next to poolside featuring state of the art exercise equipment
 Hours of operation : 24-hour Daily

3. TIMELESS BOUTIQUE & GALLERY



Location : Next to lobby area
 Hours of operation : 11.00 – 19.00 hours
 Concept : Unique boutique offering wide variety of art, handicraft and memorabilia resort items sourced within Indonesia and other Asian countries exclusively for SAMABE Bali Suites & Villas

4. SAMABE MAIN POOL



Location : Next to Crystal Blue Ocean Grill
 Hours of operation : 09.00 – 20.00 hours
 Concept : An infinity pool overlooking the Indian Ocean



FACT SHEET

- GUEST ACTIVITIES -

RESORT ACTIVITIES

NO	TIME & DURATION	VENUE/ MEETING POINT	REMARKS	MONDAY	TUESDAY	WEDNESDAY	THURSDAY	FRIDAY	SATURDAY
1	07:15 (60 Minutes)	POOL AREA	FREE	FITNESS WALK*	-	FITNESS WALK*	-	FITNESS WALK*	-
2	09:00 (60 Minutes)	REMPAH ²	FREE	FRUITS CARVING DEMO*	-	FRUITS CARVING DEMO*	-	FRUITS CARVING DEMO*	-
3	09:00 (60 Minutes)	BEACH SIDE	CHARGED FOR PRIVATE LESSON	YOGA	YOGA	YOGA	YOGA	YOGA	YOGA
4	11:00 (60 Minutes)	WANTILAN	FREE	-	BALINESE CULTURE LESSON*	-	BALINESE CULTURE LESSON*	-	-
5	11:15 (90 Minutes)	WANTILAN	FREE	BALINESE COOKING CLASS*	-	BALINESE COOKING CLASS*	-	BALINESE COOKING CLASS*	-
6	12:00 (90 Minutes)	AROUND RESORT AREA	CHARGED FOR LIMITED GUEST	BALINESE COSTUME*	BALINESE COSTUME*	BALINESE COSTUME*	BALINESE COSTUME*	BALINESE COSTUME*	BALINESE COSTUME*
7	14:00 (90 Minutes)	WANTILAN	FREE	WOOD CARVING LESSON*	BALINESE OFFERING LESSON*	-	BALINESE OFFERING LESSON*	WOOD CARVING LESSON*	-
8	16:00 (60 Minutes)	LOBBY	FREE	-	GUIDED VILLAGE BICYCLE TOUR*	-	GUIDED VILLAGE BICYCLE TOUR*	-	-
9	19:30 (90 Minutes)	BALI NUSA DUA THEATRE	CHARGED	DEV DAN SHOW	-	DEV DAN SHOW	-	DEV DAN SHOW	DEV DAN SHOW

*Reservation is required, at least 24 hours in advance.

LIVE ENTERTAINMENT

- BALINESE CULTURAL SHOW

Every Monday & Thursday

Show starts at 20.00 hour (45 minutes)

Venue : Rempah Rempah Cultural Stage

- LIVE MUSIC PERFORMANCE

Every Tuesday, Wednesday, Friday,

Saturday & Sunday

Show starts at 18.15 - 21.30 HOURS

Venue : Rempah Rempah Cultural Stage,

TE.JA.CO LOUNGE & BAR, or Ring Of Fire.

MY PEARL CHAPEL WEDDING



The contemporary majestic glass wedding chapel is blessed with a breathtaking 180-degree view of the Ocean. Walk on the illuminated bridal walkway to the altar and exchange your vows. Maximum capacity is up to 80 guests. Pearl Chapel is available for a wedding ceremony at your preferred time. Sars colors are available in pink, blue, green, orange, and purple

Wedding Inclusions :

- 2 hours exclusive use of wedding ceremony up to 20 guests at Pearl Chapel.
- English-speaking celebrant or Christian priest (non-legal).
- Your personal Romance Coordinator.
- Samabe signature fresh flower chapel decoration, including 8 standing fresh flowers, an altar table with flower arrangement, flower shower, flower aisle and wedding signage.
- Bridal bouquet for Bride and a boutonniere for Groom & Samabe signature dry ice.
- Double layer Wedding Cake & 1 Bottle of Sparkling wine.
- Samabe wedding toast mocktails and cold towels for up to 20 guests upon arrival.
- Music accompaniment by a keyboardist and a singer in the wedding ceremony.
- Standard sound system, including 2 standard in-house speakers, 2 microphones, and CD player / bluetooth / iPhone connection
- Samabe wedding stationery, including wedding programs for up to 20 guests and commemorative certificate for couple.
- Fragrant aroma burner & Samabe signature fan for wedding couple.
- A 1-night stay for Bride and Groom in One Bedroom Ocean Pool Villa inclusive of the "Limited Privileges" (or Standard Benefits).

Terms & Condition :

- Wedding can be performed at any time from 10.00 to 18.00 hours
- Commitment ceremony only.
- Weddings are not performed on 30 December to 01 January and Nyepi Day including day before and day after.

MY DREAM WEDDING BY THE BEACH



This package is our most popular package for smaller style weddings. It is a full service package that includes everything you want and to ensure you and your 10 guests enjoy the comfort and beauty while exchanging the vow in a simple yet romantic stress-free private beach setting.

*More chairs can be added

Wedding Inclusions :

- Exclusive use of West Beach area for 2 hours
- English-speaking celebrant or Christian priest (non-legal).
- Your personal Romance Coordinator.
- Beautifully decorated Bamboo Canopy with many choices of accent colors or vintage style.
- Samabe signature fresh flower, 2 basket for flower shower, flower aisle.
- Bridal bouquet for Bride and a boutonniere for Groom.
- Single layer Wedding Cake & fresh coconut for each guest.
- Music CD player or iPhone connection
- Samabe wedding stationery, including commemorative certificate for couple.

Terms & Condition :

- Wedding can be performed at any time from 16.00 to 20.00 hours or before 10.00 hour
- Commitment ceremony only.
- Weddings are not performed on 30 December to 01 January and Nyepi Day including day before and day after.

ROMANSA WEDDING



This 2 Cliff Villas, one unit with Two Bedroom for 4 guests and one unit with One Bedroom for 2 guests, a perfect choice for a smaller private event. Excellent for wedding ceremonies and wedding dinners or any other private events with 100 % breathtaking ocean view.

Wedding Inclusions :

- The perfect cliff-top wedding villa for your Big Day.
- Your decorated Cliff Garden to host both your Bali wedding ceremony and your wedding dinner reception.
- 3 courses set menu with signature wedding arch over the dinner table
- English-speaking celebrant or Christian priest (non-legal).
- Your personal Romance Coordinator.
- Bridal bouquet for Bride and a boutonniere for Groom.
- Single layer Wedding Cake & whole coconut or Cocktail.
- Music accompaniment by a keyboardist and a singer in the wedding ceremony
- Standard sound system & 2 microphones and a CD/DVD player.
- Samabe wedding stationery, including wedding programs and a commemorative certificate for couple.

Terms & Condition :

- Wedding can be performed at any time from 09.00 to 18.00 hours.
- Weddings are not performed on 30 December to 01 January and Nyepi Day including day before and day after.

MY DREAM WEDDING BY THE BEACH CAVE



This package is our most popular package for smaller & simple style weddings. It is a full service package that includes everything you would want to ensure you enjoy comfort and beauty while you exchange your vows in a simple yet romantic stress free private beach setting.

Wedding Inclusions :

- Your cave wedding by the beach is inclusive.
- 1 hour exclusive use of wedding ceremony area by the beach cave for the 2 of you.
- English-speaking celebrant or Christian priest (non-legal).
- Your personal Romance Coordinator.
- Beautifully decorated wedding table.
- Samabe signature fresh flower, 1 basket for flower shower, flower aisle.
- Bridal bouquet for Bride and a boutonniere for Groom.
- Single layer Wedding Cake & and 2 fresh coconut.
- CD or Bluetooth connection or iPhone connection for music player.
- Samabe wedding stationery, including commemorative certificate for couple.

Terms & Condition :

- Wedding can be performed at any tome from 10.00 to 18.00 hours
- Weddings are not performed on 30 December to 01 January and Nyepi Day including day before and day after.

MY WEDDING AT THE RING OF FIRE



This beautiful ring-shaped, open-air venue is a place to exchange your wedding rings in an upbeat and elegant way. Located by the poolside overlooking the spectacular Indian Ocean, your wedding will radiate joy and invite all around you to send their blessings. Maximum capacity for a wedding ceremony is up to 20 guests at your preferred time.

Wedding Inclusions :

- 2 hours exclusive use of Ring of Fire for a wedding ceremony for up to 10 guests.
- English-speaking celebrant or Christian priest (non-legal).
- Your personal Romance Coordinator.
- Signature fresh flower decoration, including 4 standing fresh flowers, a flower table arrangement, flower aisle, flower shower and wedding signage using tropical fresh flowers.
- Bridal bouquet for Bride and a boutonniere for Groom.
- Single layer Wedding Cake & 1 Bottle of Sparkling wine Samabe wedding toast Mocktail and cold towels for up to 10 guests upon arrival.
- Samabe wedding stationery, including wedding programs for up to 10 guests, and commemorative certificate for couple.

Terms & Condition :

- Wedding can be performed between 09.00 to 11.30 hours and 16.00 to 18.00 hours.
- Commitment ceremony only.
- Weddings are not performed on 30 December to 01 January and Nyepi Day including day before and day after.



FACT SHEET

- WEDDING AT SAMABE -

MY ROYAL SAMABE WEDDING



Tie the knot in style. Royal Samabe Wedding is a combination of a chapel and an outdoor venue. Set against the backdrop of a stunning 180-degree Indian Ocean view, glassy Pearl Chapel is an irresistible location for anyone who dreams of celebrating romance in Paradise. After exchanging vows, host your guests for a reception on the lawn area of the Royal Samabe Residence and make your dream wedding a unique once in a lifetime celebration. At the end of the evening retire to the Royal Samabe Residence, or Villa or Suite and spend your wedding night in total luxury. Maximum capacity at Royal Samabe Residence's lawn area is up to 100 people and the Green Lagoon up to 300 guest.

Wedding Inclusions :

- 2 hours exclusive use of wedding ceremony up to 30 guests at Pearl Chapel.
- One night Stay at the Royal Samabe Residence or two nights in a One Bed Room Ocean Pool Villa, or 3 Nights in an Ocean Front Suite with "Limited Privileges" (standard benefits) valid for up to 5 adult.
- English-speaking celebrant or Christian priest (non-legal) & personal Romance Coordinator.
- Samabe signature fresh flower chapel decoration, including 8 standing fresh flowers, an altar table with flower arrangement, flower shower, flower aisle and wedding signage.
- Bridal bouquet for Bride and a boutonniere for Groom & Samabe signature dry ice.
- Double layer Wedding Cake & 3 Bottle of Sparkling wine with Champagne Glass Pyramid.
- Samabe wedding toast mocktails and cold towels for up to 30 guests upon arrival.
- Music accompaniment by a keyboardist and a singer in the wedding ceremony.
- Standard sound system, 2 microphones, and a CD/DVD player.
- Samabe wedding stationery, including wedding programs for up to 20 guests and commemorative certificate for couple.
- Fragrant aroma burner, Samabe signature fan for wedding couple, and 30 colored Balloon.

MY ROYAL SAMABE WEDDING

Private Dinner Reception at the Residence Court Yard or Green Lagoon

Semi buffet dinner reception for 30 guests, inclusive of Samabe signature romance table and area decoration, overhead lampion and star light, Tiffany Chairs or Banquet Chairs, free flow of soft drink, tea, coffee and ice water, special Bride and Groom table, noise maker for the grand entry.



Terms & Condition :

- Wedding can be performed at any time from 10.00 to 18.00 hours
- Weddings are not performed on 30 December to 01 January and Nyepi Day including day before and day after.

SAMABE SIGNATURE STANDARD TABLE DECORATION



The following elegant table set up is the Signature Standard Decoration used for all Wedding Dinner Reception in the Resort. Decoration upgrades for table or venue can be communicated directly with our Event Team.



FACT SHEET

- MEETING AT SAMABE -

FULL DAY MEETING PACKAGE



INCLUSIONS:

- Meeting room rental
 - 1x welcome coffee and tea
 - 2x variety of freshly brewed coffee and a wide selection of tea and special light snacks self served from our Pantry through the meeting
 - 1x set menu lunch at Rempah – Rempah Main Dining Room
- Standard meeting audio visual includes LCD projector, screen, flipchart, white board, microphone and basic sound system

HALF DAY MEETING PACKAGE



INCLUSIONS:

- Meeting room rental
 - 1x welcome coffee and tea
 - 1x a variety of freshly brewed coffee and a wide selection of tea and special light snacks self served from our Pantry through the meeting
 - 1x set menu lunch at Rempah – Rempah Main Dining Room
- Standard meeting audio visual includes LCD projector, screen, flipchart, white board, microphone and basic sound system

VENUES	TOTAL (M ²)	DIMENSION (M)	THEATER	CLASS ROOM	U-SHAPE	BOARD ROOM	COCKTAIL (STANDING)	BANQUET (SEATS)
MAIN MEETING ROOM	209	22,27 X 9,40	80	50	50	50	80	80
BANTEN ROOM	40	9,67 X 4,16	N/A	N/A	N/A	16	16	16
BANTEN'S ROOM TERRACE	49	11,34 X 4,35	N/A	N/A	N/A	N/A	20	20
PEARL CHAPEL	100	N/A	80	N/A	N/A	N/A	40	40
ROYAL SAMABE RESIDENCE	50	N/A	80	N/A	N/A	N/A	80	80
POOL SIDE	105	N/A	N/A	N/A	N/A	N/A	80	35
RING OF FIRE	14	N/A	N/A	N/A	N/A	N/A	40	40
REMPAH - REMPACH MAIN DINING ROOM (OUTDOOR & INDOOR)	460	23 X 20	N/A	N/A	N/A	N/A	N/A	80
TE.JA.CO	156	13 X 12	N/A	N/A	N/A	N/A	80	N/A



FACT SHEET

LIMITED PRIVILEGES
(STANDARD BENEFITS)

INCLUDED IN YOUR ROOM RATE

Your luxury vacation at Samabe Bali Suites & Villas will include a wide selection of standard benefits as mention below

- Welcome drink & cold towel upon check-in
- Daily buffet breakfast in Rempah-Rempah Restaurant or in your own private suites or villas or you may pamper yourself by having Floating Breakfast which can be served in your private pool while gazing to the Indian Ocean
- Daily free-flow non alcoholic beverages at any of the open restaurants and bars
Complimentary one time daily replenished mini bar, stocked with beer and soft drinks
- Daily afternoon tea served in beach cave starting from 14.30 to 17.00 hours
- Daily turn down service and daily changing fresh fruit amenities in your room
- Daily complimentary yoga at the beach side
- Daily fruit service at the pool side (15.00 hour)
- Daily ice cream service for children at the pool side (15.00 hours)
- Daily cooling cucumber eye compress at the pool side (15.00 hours)
- Gym, cooking class and other guest activities included
- Complimentary wireless Internet access in your room and resort area
- Samabe original welcome gift for each guest & 24 hour butler service
- Unlimited use of non-motorized water sports (catamaran/kayak/windsurfer, snorkeling, stand up - paddle)



FACT SHEET

UNLIMITED PRIVILEGES (LUXURY ALL INCLUSIVE)

Overview

"Unlimited Privileges" is your **Luxury All Inclusive**

Located on the southernmost tip of Bali, Samabe possesses priceless beauty of the white sandy beach of Nusa Dua with its different hues of the blue ocean. Samabe is the leading Bali luxury resort offering two unique "privileges" for our guests to choose from. Our "**Unlimited Privileges**" or Luxury All Inclusive is designed for your ultimate luxury experience and satisfaction. With the luxury all-inclusive benefits such as "**Samabe Signature Activities**", a 24-hour Butler service, special welcome amenities, the full gamut of premium meals and world-class beverages, entertainment, and spa treatments, your holiday in Bali will be a highlight in your life.



Highlights

- Full gamut of premium meals & beverages, daily changing signature activities and Spa



Your stay ... with a view

- Welcome drink, daily fruit amenities, Wi-Fi
- Personalized service from your 24-hour butler and accommodated with personal butler phone
- Samabe original gift for him and her, starting from hat, slippers and beach bag
- Hospitality lounge for early check-in or late check-out
- 6 hours complimentary use of a mini meeting room
- Daily unlimited laundry (dry cleaning is not available)
- For minimum 5 nights reservation through www.samabe.com, you will receive luxury and private return airport transfer (pick up and drop off)





FACT SHEET

UNLIMITED PRIVILEGES (LUXURY ALL INCLUSIVE)

Your meals ... no limits

- Daily buffet breakfast in Rempah-Rempah Restaurant or in your own private suites or villas or you may pamper yourself by having Floating Breakfast which can be served in your private pool while gazing to the Indian Ocean
- A'la Carte breakfast at anytime and anywhere
- A'la Carte lunch or dinner in your suite or villas, restaurant, beach or pool side (Supplement charge applies for special and private arrangements and New Year's Eve gala dinner)
- Daily afternoon tea at the beach cave starting from 14.30 to 17.00 hours
- Seasonal buffet dinner and weekly special promotion
- Daily Fruit and Ice Cream service around the pool at 15.00 hour (Ice Cream only available for children)
- Experience a romantic floating dinner in the privacy of your pool villas or suites

Your drinks ... no limits

1. 24-hour complimentary non-alcoholic beverages anywhere and anytime within the resort and daily replenished minibar stocked with beer and soft drinks
2. Selection of national and international cocktails, beers, house wines and standard spirits from 17.00 hours onwards until midnight
3. Bar menu available on line



FACT SHEET

UNLIMITED PRIVILEGES (LUXURY ALL INCLUSIVE)

Restaurants & Bars

- **Rempah-Rempah Main Dining Room**
Open daily from 06.00 to 23.00 hours presenting modern color, flavors and fragrances of Pan Asian cuisine.
- **Te.Ja.Co Lounge & Bar**
Presenting three elements that make its unique name; tea, Jamu (traditional Indonesian healthy drinks) and coffee along with other international premium beverages. Te.Ja.Co is open from 11.00 to 02.00 hours.
- **Crystal Blue Ocean Grill**
Open from 11:00 to 23.00 hours, serving fresh Mediterranean cuisine seafood and grill selection in a magnificent ambiance supported by magical vistas of the ocean.
- **Ring of Fire Pool Bar**
Open from 10:00 to 23.00 hours. Located at the main pool and is seductively attractive with its Mediterranean bar, pool and beach snacks.
- **In Villa & Suite Dining**
It's a fine-dining experience within the comfort and convenience of your villa or suite. Choose from the in-room dining menu throughout the day and night, featuring Western and Asian favorites and let your butler set you the table for a personal and romantic dinner.



Your activities ...Your choice

Daily one **Samabe Signature Activity** at your choice. Advance reservation is recommended. Your butler will be happy to assist you.

- Non-motorized water sport, ocean Kayak, Catamaran sailing (Hobie Cat), wind surfing, snorkeling, standup paddle
- Yoga, 24-hour gym, morning walk, cooking class, Balinese cultural art & dance lesson
- Seasonal activities & bike rental
- Daily cooling cucumber eye compress in the pool side at 15.00 hour
- One signature activity per day

(<https://www.samabe.com/en/all-inclusive/all-inclusive-activities.php>)



FACT SHEET

UNLIMITED PRIVILEGES (LUXURY ALL INCLUSIVE)

As part of your “**Unlimited Privileges**” you can choose one of the following **Samabe Signature Activities**: (One activity per stay / daily. Advance reservation is necessary)

1. **60 minutes massage** in the privacy of your room or suite available from 12.00 to 20.00 hours. For children, the duration of massage only 30 minutes.
2. **Samabe Beach Cave Dining** experience
3. Watch the **Devdan Show** at the **Bali Nusa Dua Theatre** on every Monday, Wednesday, Friday and Saturday. Samabe will pick you up at the lobby at 18.30 hours and will be back at the resort at 21.00 hours at the latest. For more information about devdan Show please visit www.devdanshow.com
4. **Sea-Walker** adventure availability depends on ocean tide. Only available for guest above 15 years old.
5. **60 minutes of Thalasso Aquamedic Pool** available on every Monday, Thursday and Friday from 18.00 hours onwards.
6. **Batik Painting Class** available every Monday at 14.00 hours
7. **Balinese Costume Dressing** with picture taking available daily at 13.00 hours
8. **Shared Sunset Tour to Uluwatu** on every Tuesday, Thursday, Friday and Sunday. Departure time from the lobby is 16.30 hours and will be back at the resort at 19.30 hours
9. **Indonesian Rijstaffel Experience** for the two of you. Available daily at **Rempah-Rempah Main Dining Room**.
10. **60 minutes body scrub** available daily at the **Galangal Spa**. For guest 12 years and above.
11. **30 minutes sunset foot reflexology** at the pool side (if the weather permits) available from 17.00 hours onwards

**advance reservation is recommended*

For Your Children

1. Samabe kids welcome surprise; including sarong, rucksack and many more
2. Kids amenities including bathrobe & slipper
3. Kids club entrance with supervised activities
4. Kids camp in your villa garden
5. Pool fun toys in your villa only (not available in suites)



FACT SHEET

SPECIAL CELEBRATION BENEFITS

Honeymoon, Birthday, and Anniversary (min. 2 nights stay)

A small token of appreciation for your guest who celebrate birthday or honeymoon – ranging from bouquet of flowers, chocolate praline, to a small cake – is a common thing guests can expect from a 5-star resort. Now if you are on a honeymoon, or if you are having a birthday while you are staying at Samabe Bali Suites & Villas, you have the choice from ten complimentary options to give your special day a sweet little touch. Minimum stay 2 nights is required. Please mention in advance when sending your reservation.

1. **One bottle of sparkling wine in your suite or villa upon arrival/birthday.** This is a refreshing way to ignite the night of celebration with your loved one.
2. **Love swan with flowers on the bed upon arrival/birthday.** A love swan will greet you as you step into your bedroom. A typical yet sensual touch to set a special atmosphere to mark your romantic getaway with.
3. **Romantic surprise flower** decoration in your suite or villa upon arrival/ birthday. You can arrange to have a flower decoration prepared prior to your check-in to give your partner a lovely surprise.
4. **Romantic Gazebo Lunch Picnic at Crystal Blue.** Are you up to something charming to celebrate your birthday? How about with this romantic lagoon lunch picnic for you and your loved one? It's going to be anything but ordinary for both of you.
5. **Aroma flower candle bath upon arrival.** An intimate moment is created as soon as you begin your romantic journey at Samabe with an inviting aroma candle bath on your arrival/birthday.
6. **Samabe signature chocolate and canapés.** Are you sweet-toothed? We have something sweet for you with a wish that your entire holiday experience will be as sweet as the moment.
7. **Chocolate fondue** prepared by your butler at requested day and time. Chocolate fondue for two is a heartwarming way to wish a happy day for more happy years to come.
8. **Honeymoon Cake.** It can be delivered to your room or suite at the time and day you choose.
9. **Birthday Cake with Samabe Parade.** It can be delivered to your room or suite or at your dinner table by a group waiter/waitress/butler together with a flower chain and some other surprises. Have your camera ready. This is a good option for both children & adult.
10. **Indonesian Rijsttafel Dinner Experience** at Rempah-Rempah Main Dining Room.

Don't miss this exciting opportunity, and take your pick! Let us know in advance or tell the butler what you wish to have and we'll make the moment special for you. Reserve your romantic getaway now and redefine luxury with Samabe Bali.